

\*Features:

- HALED patent optics design, similar to halogen light effect
- Easy and quick installation
- PF>0.85, flicker free, follows new ErP
- Dimmable or Dim to warm halogen function by triac dimmer  
6W HALED lamp replace 75W halogen lamp
- CRI 95, R9>90
- Low UGR
- Peak luminous intensity is 1.25 times of parallel products
- Suitable for all kinds of unenclosed luminaire
- Metal structure, excellent heat dissipation
- Lifespan 40,000 hrs, 5 years warranty
- High energy efficiency



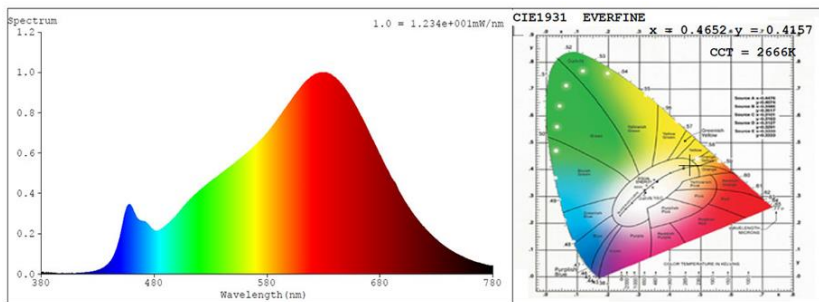
Applications

- Residential application and hotel lighting.
- Commercial lighting like restaurants, bars,cafes, etc.

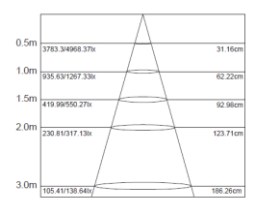
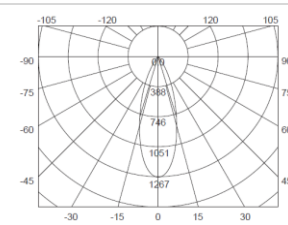
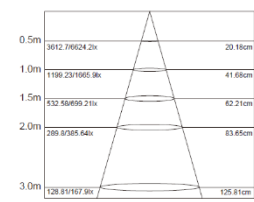
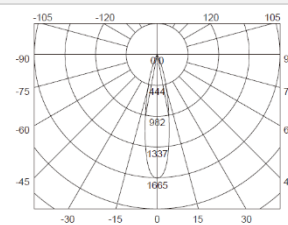
Technical data

Part No.	Type of installation		
WMK002K06	Double wiring		
Electrical specifications			
Wattage (W)	6W	Power factor	>0.9
AC input voltage (V)	AC200V-240V	Current	30mA
Frequency (Hz)	50/60Hz	DC output voltage (V)	-
Flicker metric PST	0.023	Stroboscopic effect metric SVN	0.25
Total harmonic distortion (THD)	24%	Dimmable	Dimmable
Max. no. of lamps on B16A circuit breaker	420	Max. no. of lamps on C10A circuit breaker	180
Max. no. of lamps on C16A circuit breaker	420		
Photometric specifications			
Color temperature (CCT)	2700K	CRI/ R9	95/ >90(Min.)
Chromaticity coordinate (x/ y)	2700K: 0.459/ 0.412	Standard deviation of colour	≤3 SDCM
Useful luminous flux (lm)	500lm± 5%	Luminous efficiency (lm/W)	98lm/ W (ERP)
UGR	≤19		

### Photometric Information



EAN	Colour	Beam angle	Peak Luminous intensity
47812(2700K) 47813(3000K)	Titanium	24°	1650cd
47817(2700K) 47818(3000K)	Titanium	36°	1200cd



#### Mechanical specifications

Housing material	Aluminium
Optical cover/ lens material	AlReflector+PC+Glass
Width/ diameter	50mm
Product weight	100g

#### Lifespan

Number of switching cycles	100,000-
L80/B10 service life at 25°C	40,000 hrs
Warranty	5 Years

#### Application parameters

Working temperatuer range	-20~+50 °C
---------------------------	------------

#### Package

Individual package length	50mm
Individual package height	60mm
Individual package width	50mm
Gross weight (single item)	115g
Driver	Internal

#### Housing Colour

Housing Colour	Titanium
Length/ diameter	50mm
Height	50mm

#### L70/B50 service life at 25°C

L70/B50 service life at 25°C	50,000 hrs
L90/B10 service life at 25°C	20,000 hrs

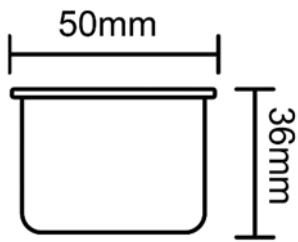
#### Storage temperature range

Storage temperature range	-20~+70 °C
---------------------------	------------

#### Shipping box height

Shipping box height	580mm
Shipping box height	185mm
Shipping box width	285mm
Packaging unit	100pcs
Gross weight (Shipping box)	12kgs

Technical Drawings (mm)



Note: Height between the module and roof should be no less than 10cm for heat dissipation purpose for installation.



Inner Box 50\*50\*60mm



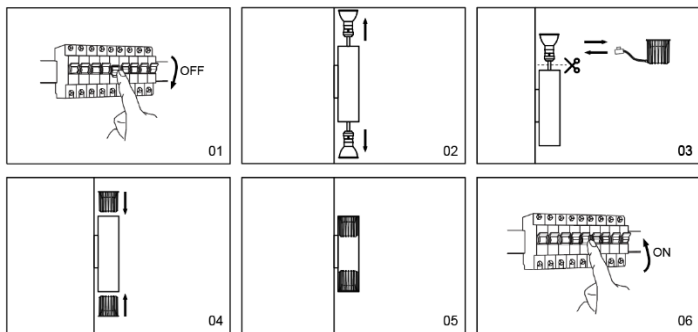
Inner Carton 270\*110\*80mm(10PCS)



Shipping Carton 580\*285\*185mm(100PCS)

Installation /Mounting:

Please read the entire instruction manual before using the product and reserve it for future reference. We reserve the right for any error in text or image and any necessary change made to technical data. If you have any question regarding technical problems, please contact our Customer Services.



Cautions:

- Don't touch the lamp when it is lighted
- Don't use it in enclosed luminaire
- Power off before replacement
- Do not in violation of any fire regulations when using
- Consult professional electricians for technical support
- If the cable is damaged, it must be replaced by the manufacturer and its service agent, or qualified person in order to avoid hazards.